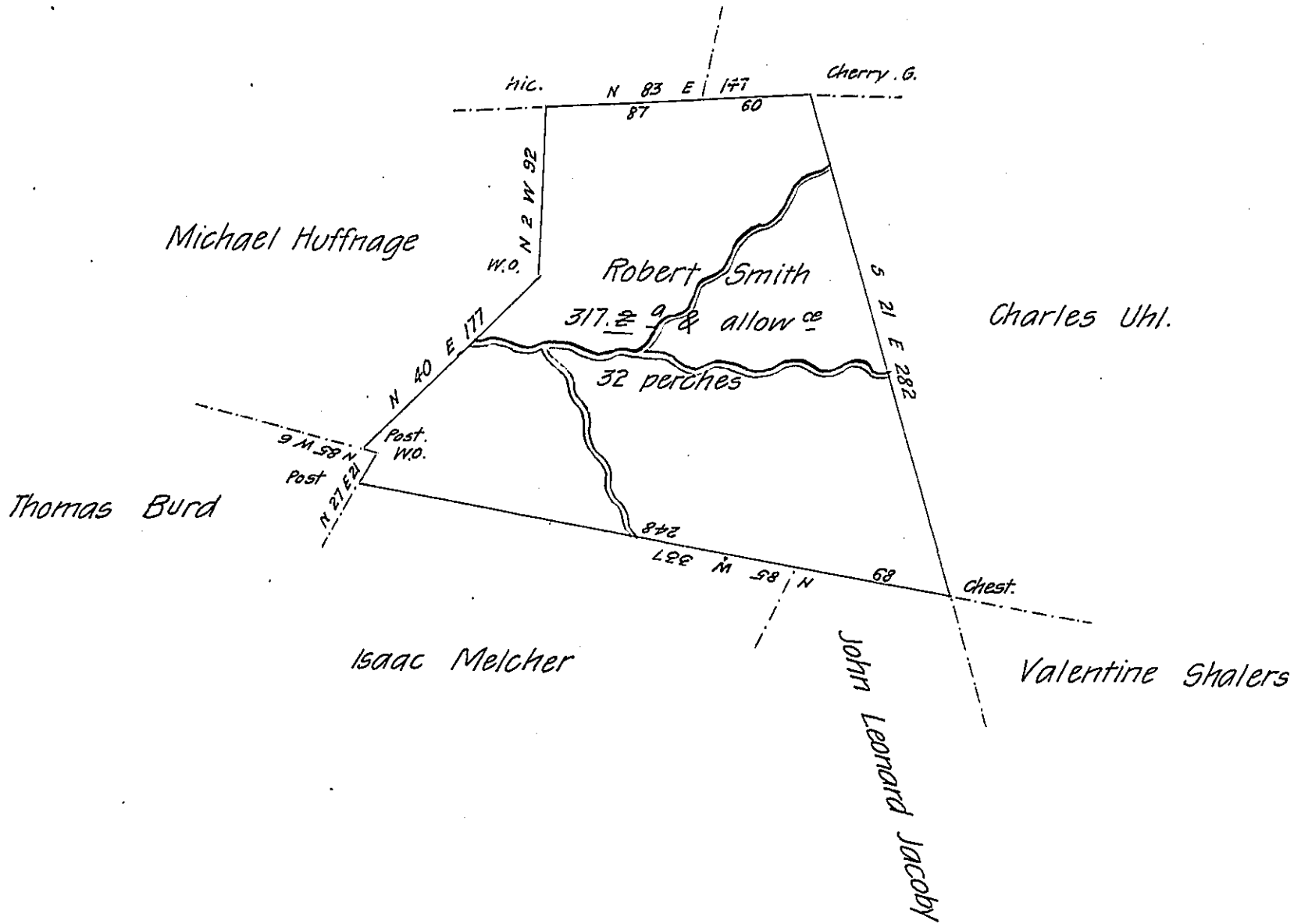


Robt S. Steele

John Smith
C. 210-104



Surveyed to Robert Smith on the 9th day of May 1786 the above described tract of three hundred & seventeen acres & two tenths of an acre & Allowance of Six P. Cent Situate on a Run leading on the North side of Crooked Creek near or about five miles distance from the mouth of said Creek in Westmor-land County By Warrant of the 5th day of July 1784

Joshua Elder D.S.

Now in Armstrong County

John Lukens Esq.
S. Genl

IN TESTIMONY that the above is a copy of the original remaining on file in the Department of Internal Affairs of Pennsylvania, made conformably to an Act of Assembly approved the 16th day of February, 1833, I have hereunto set my Hand and caused the Seal of said Department to be affixed at Harrisburg, this third day of December 1906

Isaac R. Brown
Secretary of Internal Affairs.